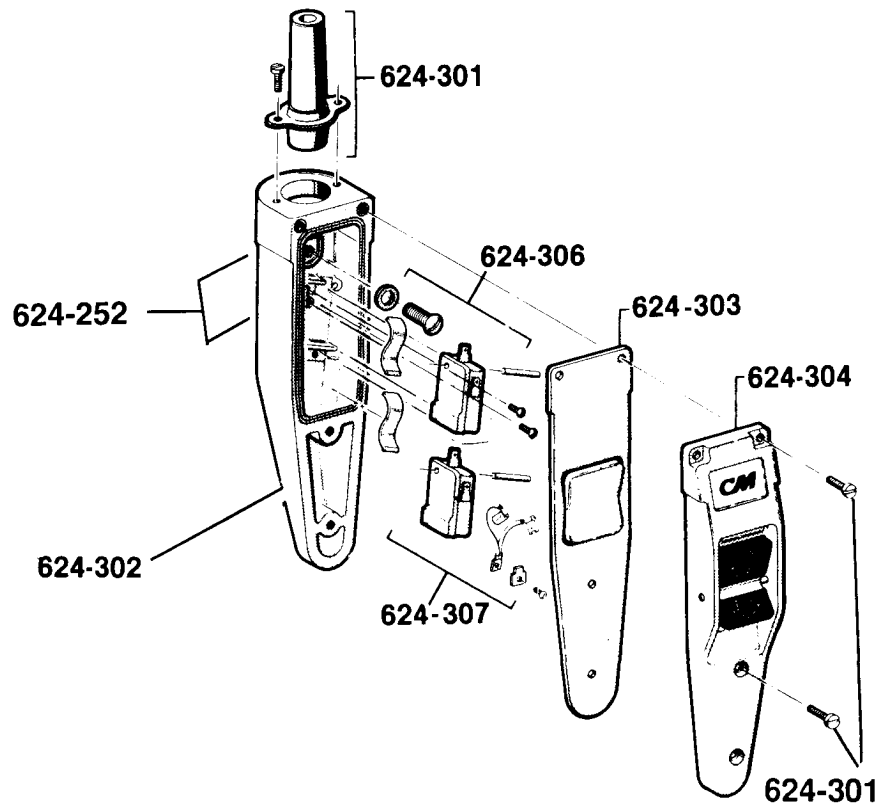


## CM Valustar Control Station Parts List



| Key No.  | Part Name   | No. Req'd. | Part No. |
|----------|---|------------|----------|
| *624-232 | Control Station Consists Of: (1) Cover Assembly, (1) Gasket, (1) Case, (2) Switch, (1) Jumper, (1) Terminal, (1) Terminal Screw, (2) Switch Leaf Spring, (2) Switch Mounting Pin, (2) Pin Retainer Screw and (1) Warning Label. | 1          | 28630    |
| 624-252  | Warning Label (Electrical)  | 1          | 24842    |
| 624-301  | Control Station Kit Consisting Of: (1) Grommet, (1) Grommet Retainer Ring, (2) Grommet Retainer Ring Attaching Screw, (4) Cover Screw, (1) Strain Cable Attaching Screw, and (1) Strain Cable Attaching Screw Washer.           | 1          | 28627    |
| 624-302  | Case  | 1          | 28873    |
| 624-303  | Gasket  | 1          | 28876    |
| 624-304  | Cover Assembly (Decal and Rocker Included)  | 1          | 51477    |
| 624-306  | Control Station Parts Kit Consisting Of: (1) Strain Cable Attaching Screw, (1) Strain Cable Attaching Screw Washer, (2) Switch Mounting Pin, (2) Pin Retainer Screw and (2) Switch Leaf Spring.                                 | 1          | 51481    |
| 624-307  | Control Station Switch Kit Consisting Of: (2) Switch, (1) Jumper, (1) Terminal, and (1) Screw.  | 1          | 51472    |

\*Also order 28627 Control Station Kit.